



2018-19 REPORT TO INVESTORS

Dear Friend, Investor, and Advocate,

Social Advocates for Youth (SAY) has served Sonoma County's vulnerable children, youth, and families for the last 48 years. Often, we are working with them during the most difficult time of their lives – a time when support, care, and investment is critical to a young person's ability to not only thrive, but to build a foundation that will allow them to thrive.

As I look back on our 2018-2019 fiscal year, I'm so proud of the work we have done together. As a community, we helped 319 young people find safe and stable housing, connected 206 youth to job readiness and work experience opportunities, and provided more than 1,700 youth and their families with mental health support. That's only a snapshot of all we were able to accomplish because you cared about and invested in the most vulnerable young people in our community so they could build the tools and skills necessary to thrive. The amazing growth and programmatic outcomes you will learn about in the following pages were truly only possible because of your support, and we are deeply grateful for your steadfast commitment to empowering our youth to become their best selves.

With your investment in SAY, you've helped change the life trajectory of more than 3,500 children, youth, and families needing our programs and services. However, your impact will extend far beyond this fiscal year. The youth we serve will feel your collective impact when they successfully finish high school, secure their first job, engage in healthy relationships, or have a warm safe place to call home every night.

In it together,

Anita Maldonado  
Chief Executive Officer



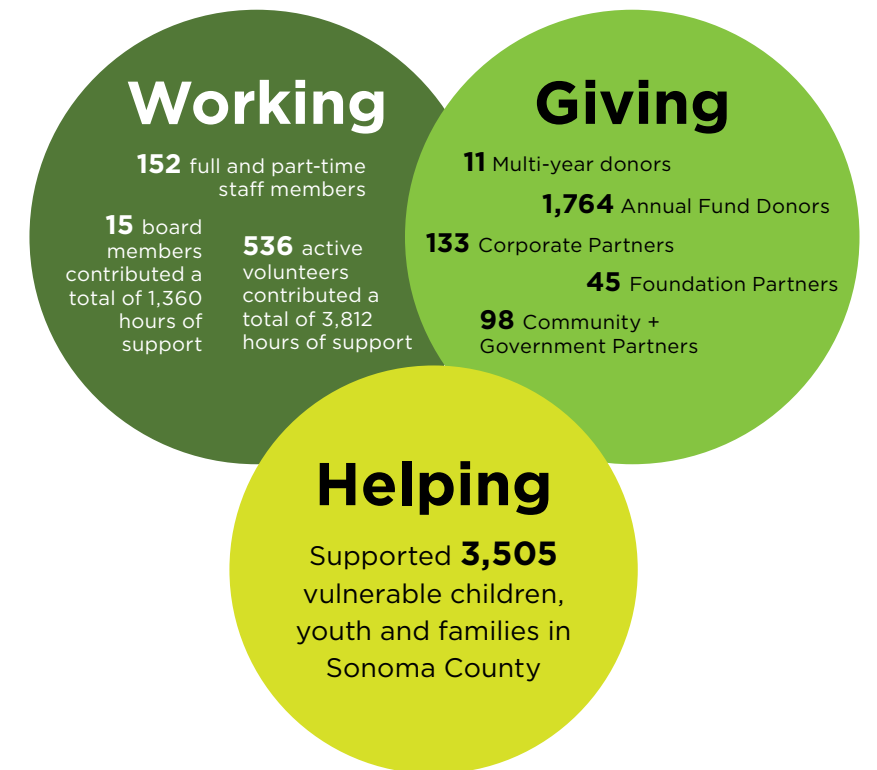
Anita Maldonado, CEO

### Table of Contents

|                                  |    |
|----------------------------------|----|
| 2018-19 Board of Directors . . . | 2  |
| 2018-19 Financials . . . . .     | 3  |
| Housing Services . . . . .       | 4  |
| Counseling Services . . . . .    | 6  |
| Career Services . . . . .        | 8  |
| Volunteer Services . . . . .     | 10 |
| 2018-19 Investors . . . . .      | 12 |

## Agency Overview

Sonoma County youth have amazing, diverse, and ambitious dreams. They want to grow up and make a difference in the world. While they play a foundational role in our shared future, growing numbers of local youth are disconnected, hopeless, and cannot see a clear path to success. A disproportionate number are vulnerable due to past trauma. Social Advocates for Youth's (SAY) programs and services help youth build resilience by offering support, opportunities, and hope to empower them to thrive as healthy, self-sufficient adults who positively engage with our community and contribute to the local workforce and economy.



- #### Our Core Values
1. We love people
  2. We are there for youth when they need it the most
  3. We are in it together
  4. We are youthful
  5. We are our best selves
  6. We are committed to service
  7. We are bold

# 2018-19 Board of Directors

Scott Pritchard, Board President  
*President, Transplant Transportation Services*

Lisa Wittke Schaffner, Board Vice President  
*Executive Director, John Jordan Foundation*

Ty Comstock, Board Treasurer  
*Executive Vice President/CFO, Jackson Family Enterprises*

Troy Niday, Board Secretary  
*Chief Operating Officer, Press Democrat*

Gerard Giudice, Member-At-Large  
*Owner, Sally Tomatoes*

Jeff Ahlers, *Chief Executive Officer, La Tortilla Factory*

Lorraine Ashton, *Clinical Psychologist, Private Practice*

Susan Barnes, *Principal, Barnes & Company LLC*

Gina Belforte, *Owner, Stanley Steemer*

Matt Brewer, *Senior Manager, Pisenti & Brinker LLP*

Kristine Burk, *Attorney, Law office of Kristine Burk*

Michael Cook, *Vice President/CFO, Firma Design Group*

Peter Hsu, *Managing Director, Wine & Beverage, Bank of the West*

Christopher Mahurin, *Sergeant, Santa Rosa Police Department*

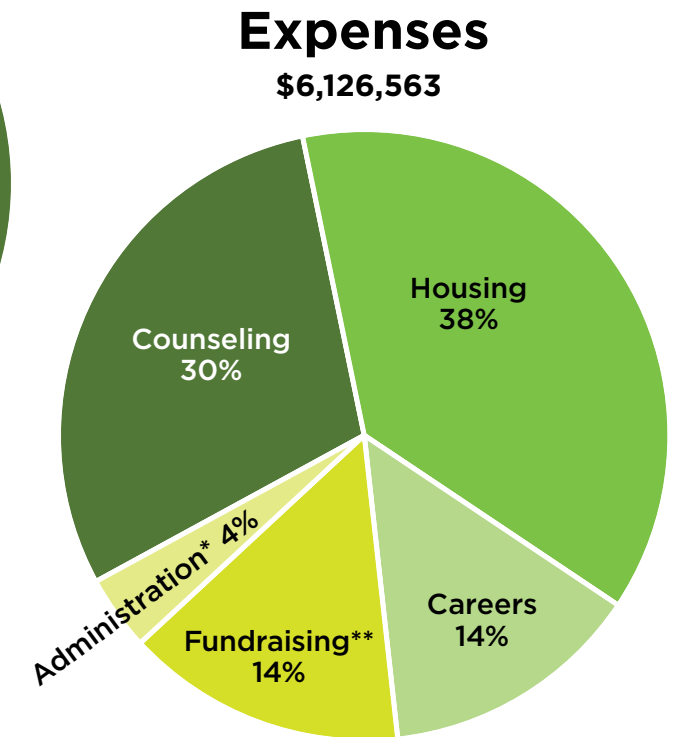
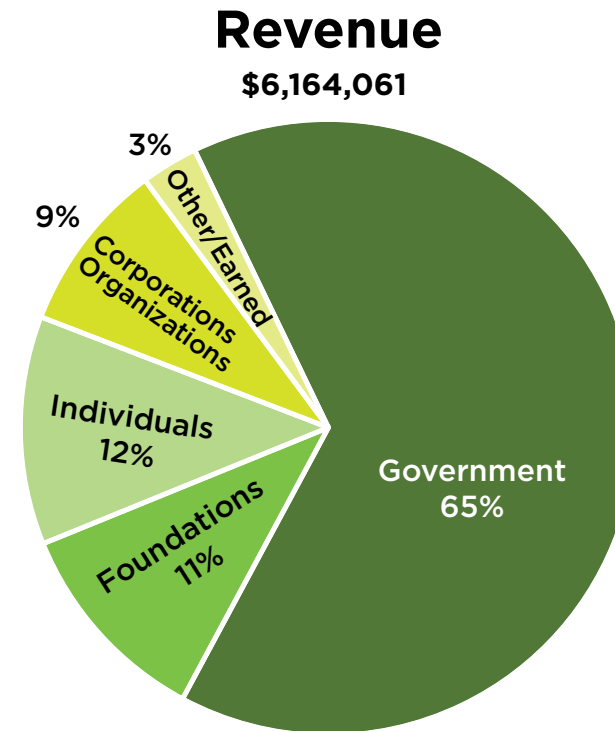
Austin Notley, *Youth Board Member*

| Honorary Board of Directors    |
|--------------------------------|
| Marcus Benedetti               |
| Ernie Carpenter                |
| Bob Casanova                   |
| Connie Coddling                |
| Jayne Cohill                   |
| Matthew Davis                  |
| Nancy Fastenau                 |
| Bill Friedman                  |
| Hon. Gayle Guynup              |
| Kevin Konicek                  |
| Kay Marquet                    |
| John Meislahn                  |
| Steve Page                     |
| Brian Purtill                  |
| District Attorney Jill Ravitch |
| Hon. Arnold Rosenfield         |
| Willie Tamayo                  |
| Linda Tavis                    |
| Vic Trione                     |
| Steve Worthen                  |
| Supervisor Shirlee Zane        |

# 2018-19 Financials

| Revenue                    |                    |
|----------------------------|--------------------|
| Government                 | \$4,020,194        |
| Individuals                | \$739,388          |
| Foundations                | \$650,409          |
| Corporations/Organizations | \$557,664          |
| Other/Earned*              | \$196,405          |
| <b>Total Revenue:</b>      | <b>\$6,164,061</b> |

\*Reflects modest fee-for-service



\*Finance, HR and Board  
\*\*Fundraising & Business Development

Programs:  
**Housing Services**

**Supporting Youth When They Need It the Most**

According to the 2019 Point-In-Time Homeless Census and Survey, more than 650 young people are experiencing homelessness every day in Sonoma County, representing a 29% increase over 2018. This includes young people couch surfing as well as those living in cars, abandoned buildings, on the street, or in other places not intended for humans to live in. These young people are extremely vulnerable to sexual exploitation, violence, trauma, and serious mental and physical health issues.

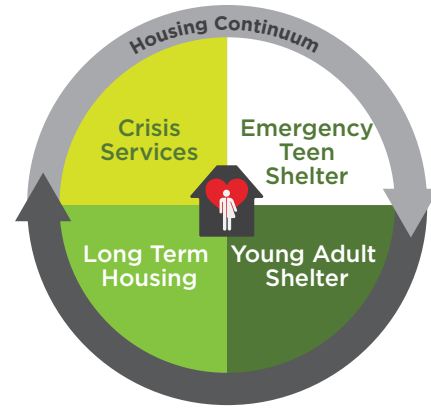
**In the 2018-2019 fiscal year, 319 youth found a safe place to live in an SAY housing program.** These are our young people: 98% of youth that received SAY housing services were born and raised in Sonoma County.

SAY's housing services are composed of two major components: crisis services and long-term supportive housing. Meeting young people where they are and helping them out of crisis is at the core of our work in the community. To aid in this, SAY operates two critical services for youth in crisis: **the only 24/7 Youth Crisis Hotline and the only dedicated Street Outreach team for homeless youth in Sonoma County.**

These services allowed our staff to:

- Answer 239 emergency crisis calls.
- Serve 284 of the most vulnerable young people living on the streets by addressing their most immediate needs, including housing support, hygiene supplies, food, and referrals to key services.
- Serve 2,697 meals to youth accessing drop-in services!

Another key component of SAY's crisis services is our shelter programs. These programs get young people off the streets and out of unsafe, unstable living conditions with the ultimate goal of connecting them to permanent housing. Currently, SAY operates the only dedicated teen shelter and young adult shelter between San Francisco and the Oregon border.



Do you know a young person who is in crisis or needs housing? SAY can help. Call our 24/7 hotline at 1-888-729-0012.



603 youth accessed our housing services across these programs:

- Street Outreach Services
- Dr. Coffee House Teen Shelter
- SAY Finley Dream Center Young Adult Shelter
- Expanded Youth Winter Shelter
- The Mary and Jose Tamayo Village
- SAY Finley Dream Center Long-term Housing
- Community Based Housing

**Youth demographics**

- 98% born in Sonoma County
- 55% identify as LGBTQIA+
- 30% experienced homelessness with their family before coming to SAY
- 87% of SAY residents are working, in school, or both
- 73% of residents were able to increase their income while living with SAY



*“Staff taught me that when things get really hard you never give up because it’s life and it only makes you stronger.”*  
 —21 year old housing client

**This year, 198 young people utilized SAY’s life-saving shelters, including 20 youth escaping the trauma of human trafficking.**

**Why are young people homeless in our community?**

Experiencing homelessness at any age is a complex matter with many causes and effects. At SAY, the main reasons we see young people becoming homeless are:

- A fight with family.
- Their family is abusive and continuing to live with them is perceived as more dangerous than living on the streets.
- 30% of young people in our housing programs come from generational homelessness.
- 90% of young people in our housing programs can't identify one caring adult or support system in their life before coming to SAY.
- Severe shortage of affordable housing stock in Sonoma County, particularly since the 2017 wildfires.

SAY's long-term affordable housing programs are designed to prepare young people for the future and support them on their path to self-sufficiency. In these programs young people pay rent, purchase and cook their food, and must maintain a healthy living environment. **78% of residents successfully exited into safe and stable housing when they moved out.**

Programs:  
**Counseling Services**

**Supporting Youth When they Need It the Most**

SAY offers mental health services to children and youth ages 5-25 and their families across Sonoma County. These services are offered on-site at the SAY Finley Dream Center counseling clinic, at satellite sites, in family homes, and in more than 20 schools. **During the 2018-2019 fiscal year, we supported 1,701 youth and families on their journey to feel stronger and more hopeful.**

SAY’s counseling clinic served 392 youth and their families with mental health support. Our clinicians engage youth and families using multiple modalities, including cognitive behavioral therapy, Functional Family Therapy, and trauma-informed therapy. These techniques help the therapist, client, and family work together to solve problems and foster healthy relationships and communication. **61% of clients in our counseling clinic reported an improvement in symptoms and were better able to care for themselves after receiving services.**

**In our school mental health program, 887 students in elementary, middle, and high schools throughout Sonoma County received mental health services.** These services are designed to help students decrease social-emotional barriers to learning so they can be fully present in their education. In addition to serving students in our community, SAY’s school clinicians were also able to support 305 parents in working with their children who were struggling at school. At the end of the school year:

- 94% of students reported working with an SAY clinician was helpful.
- 75% of students reported they were getting along better with family and friends.
- 65% of students reported they were better able to help themselves when things go wrong.

As one of our Counseling Department programs, SAY Grief Services meets the needs of grieving youth in Sonoma County by offering free support groups for youth,



Do you know a young person who needs mental health support? SAY can help. Call our intake line at 707-544-3299 x237.



*“I found self-love and appreciation. I put myself before others which allows me to be less anxious and live in the moment.”*  
 —16 year old student

**What type of mental health topics does SAY help young people process?**

- Anxiety
- Depression
- Behavioral issues
- Poor school functioning
- Problems with peers and/or home
- Family separation
- Self-harm behaviors
- Suicidality
- Drugs and/or alcohol use
- Trauma
- Eating disturbances
- Motivation and planning
- Bullying
- Grief
- Immigration anxiety
- Anger
- LGBTQIA+ experience
- Gang-related impacts



youth and families accessed our counseling services across these programs:

- Individual and Family Therapy
- Home-based Therapy
- Sand Tray Therapy
- Art Therapy
- Play Therapy
- Grief Services
- School Mental Health Program

school-based programming, and emergency response to community or school losses. This program focuses on using interactive therapeutic techniques, including expressive arts, pro-social interaction, and teaching self-care, to support grieving youth in our community. Over time, this support helps young people make informed, healthy decisions about life as they struggle to understand their devastating feelings of loss. **This year, SAY served 116 youth and their families with grief support; 100% of participants reported they were better able to cope after utilizing grief services.**

Programs:  
**Career Services**

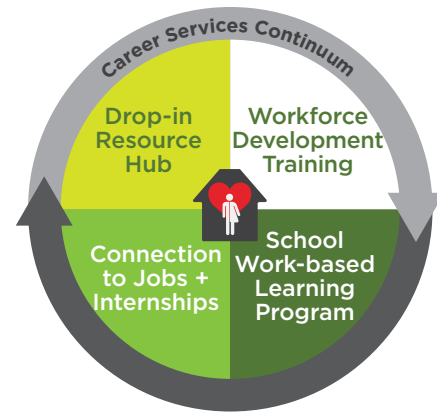
**Supporting Youth When they Need It the Most**

Disconnected youth are often defined as teenagers and young adults between the ages of 16-24 who are neither in school nor working. Being disconnected as a young person matters because this is the time when our adult identities are being shaped. Research shows that youth experiencing periods of disconnection are more likely to engage in risky behaviors, are at-risk of victimization by adults, earn less income, and face higher rates of incarceration and unemployment.

To help combat disconnection in Sonoma County, SAY Career Services empower youth on the path to self-sufficiency and a brighter future by implementing research and evidence-based programming specifically designed to increase connections and decrease barriers to gainful employment. We believe that connection and self-sufficiency are possible when youth are provided individualized, flexible, and compassionate supportive services.

**During the 2018-2019 fiscal year, SAY helped 150 youth become workforce ready through professional development workshops and individualized case management. An additional 56 youth were connected to meaningful paid work experience opportunities in Sonoma County!**

One of the goals of SAY's Career Services programming is to ensure that young people in our community have access to career exploration opportunities. Evidence suggests that students who engage in experiences that connect school learning to the real world are more likely to stay in school and increases the chances that students will be both college and career ready! SAY's College and Career Readiness program utilizes a Work-Based Learning model to connect with hundreds of students each year. Students are able to participate in mock interviews, professional development workshops, industry panels and networking opportunities, and in-depth tours of local businesses in



Do you know a young person who needs help finding and keeping a job? SAY can help. Call 707-544-3304.



youth accessed our career services across these programs:

- Career and Life Readiness
- Clean Slate Tattoo Removal
- College and Career Readiness



**Results that Work**

- 239 Resumes Crafted
- 40 Tattoos Removed
- 42 Professional Development Workshops
- 321 Visits to SAY's Drop-in Career Hub
- 267 Work-based Learning Workshops
- 662 Career Prep Certificates Awarded

**What kind of professional development skills does SAY teach young people?**

- Communication and active listening
- How to work as part of a team
- Responsibility and SMART goals
- Resolving conflict in the workplace
- Professional interview etiquette
- Intro to resumes and cover letters



*"Thank you for all you have done. I don't know what I did to deserve this support."  
 —17 year old client*

our community. **During this fiscal year, more than 900 students across six Santa Rosa City schools participated in SAY's College and Career Readiness program.**

We began this fiscal year with the annual SAY Youth Job Fair. Traditional job fairs can be a little intimidating, so our staff created an innovative way to engage young people by hosting a youth-centric event that features employers recruiting for entry-level positions with lots of opportunity for advancement. And this job fair model is a huge success! Many young people go outside their comfort zones and take the first step toward their future careers, with several youth securing interviews on the spot each year. **Overall, 63 young people attended and more than 20 employers participated.**

# Volunteer Services

## We Love People!

Volunteers are an essential component to SAY’s mission, services, and operations. **During the 2018-2019 fiscal year, 536 community members volunteered more than 3,800 hours of their time and talents for the young people we serve.** From administrative support to working directly with youth in our programs, volunteers are critical to the success of our agency and make a positive impact on our community as a whole.

## Volunteer Spotlight: Game Night at Tamayo Village

It’s the first Thursday of the month, and you can hear raucous laughter filling the hallway at SAY’s Tamayo Village. Inside, a group of six volunteers are learning a new card game from a young woman who calls Tamayo Village home. Deception and accusations are part of the game, but with this group, it’s all friendly.

“I like to think that they get a taste of what family is like,” says volunteer Judy Ervice. “My guess is that many did not grow up with families that sat around and played games. So we can joke and lose and it doesn’t matter. And we can tease each other. It’s good life skills.”

“And nothing is electronic!” Adds her husband, Greg, laughing.

The Game Night crew meets once a month, bringing potluck dinner and board games to the youth. It’s often just a handful of residents who stop by to pick a plate and maybe join in for a round or two of games. Regardless of how many or few attend, this group always has a good time.

“It’s really nice to be here with no expectations,” Greg comments. “If they want to come out and talk to us, or they want to stay in their rooms. It’s all perfectly okay.”

“We’re strangers, and we’re coming here, into their home, and everyone’s been really open,” Eric Fresquez adds.

Are you interested in volunteering with SAY? We’d love to hear from you! Get in touch with us at 544-3299 x255 or [volunteer@saysc.org](mailto:volunteer@saysc.org)

### Community Care

- 116 community members prepared and delivered homemade dinners to young people staying in our shelters
- 128 community members helped support our spring fundraiser, SAY Soirée
- 3,812 hours of support provided to SAY!



Erin joined SAY’s volunteer team late in the summer, and has happily signed on for a couple of different volunteer roles. “I always look forward to it. I don’t know if they are even that excited about game night, but I am!”

For new volunteer Shannen Keiko Garcia, her motivation is deeply personal. “I, myself, grew up homeless. So bringing my own experience in being able to get out of that is something I hope to share with them. This holds a really big part of my heart.”

Between the board games and Rafael, a certified emotional support dog who greets everyone who joins the table, Game Night is full of life, community, and playful competition.

# 2018-19 Investors

## Hope Society

The SAY Hope Society is a group of dedicated advocates who have committed to supporting the youth we serve for at least five years. SAY pledges to be there for their entire journey to self-sufficiency, and multi-year investments are a critical part of this effort. Hope Society members pledge to stand by our youth, telling them that they are an important part of our community and our shared future.

- |                            |                                   |
|----------------------------|-----------------------------------|
| Brett and Krystin Bradford | Cindy and Al Schmidt              |
| Bill and Pamela Carrol     | Julie and Scott Schoepp           |
| Codding Foundation         | Linda C. Tavis and Elliot L. Daum |
| Edwards Family             | Vic and Karen Trione              |
| Friedman Family            | Sharon and Greg Zimmerman         |
| Paula and Albert Handelman |                                   |
| Bill McLea and Dale Walsh  |                                   |

*“SAY provided an understanding perspective that no one has shown me before. They understand or, if they don’t, they do their best to. They don’t just make sure you have housing, they also care about your mental state.” –19 year old resident*



## SAY Annual Fund

We are deeply grateful for the financial investments and in-kind gifts received from 1,764 donors. Your support is vital to our ability to operate our programs and services effectively and sustainably while serving the most vulnerable members of our community. Thank you for wrapping your generosity and hearts around the young people and families who need us most.



### \$25,000+

Peggy Furth

### \$10,000+

Janet and Mark Calhoon  
 Matt and Chrystal Davis  
 Ken and Donna Martin Family Trust  
 Jacqueline and Lawrence Simons  
 Belinda and Dean Soiland  
 Linda C. Tavis and Elliot L. Daum  
 Gene and Suzanne Valla

### \$5,000+

Anonymous (4)  
 Beatrice Alvarez  
 Susan Barnes  
 Keith Becker  
 Lee Brockett  
 Julia L. Grant Donor Advised Fund  
 Mary Janis  
 David and Joan Jasper  
 Judith L. Jordan  
 Patricia May, MD  
 Mitchel Family Fund of the Community Foundation Sonoma County  
 Pritchard Family  
 Stephen and Linda Schuck  
 Robert and Vicki Thiessen  
 Wendy Young  
 Wright Family Fund of Community Foundation Sonoma County

### \$1,000+

Ted Patchet  
 Erich Pearson  
 Gina Pearson  
 Lyle Poncher  
 David and Syliva Proctor  
 Michael Purvis and Carol Lawrence  
 Rebecca Rappensperger  
 Bill Reinking  
 Justin and Jill Richardson  
 Gary Russey  
 Lisa Wittke Schaffner  
 Crystal Silva  
 Dave and Sue Soiland  
 Soiland Family Charitable Fund  
 Mark and Vivian Stapp  
 Pamela Tauffer  
 PTaines/CHyman Charitable Fund  
 Jamie Thistlethwaite and Steve Weiss  
 Rosa Toral  
 Zane Wheelers  
 Laural and Paul Whooley-Poirer  
 Jeffrey and Edith Wong  
 Mario and Toni Zepponi  
 Sharon and Greg Zimmerman

### \$500+

Anonymous (8)  
 Richard and Mary Abbey  
 Ursula Albertson  
 Norma and Susan Anderson  
 Caryoln Anderson  
 Gabriel Arevalo

Gail Baker  
 Leta Barnes  
 Mary Barron  
 Asha Batna  
 Mark Bello  
 Henry Belmonte  
 Mike and Mary Benziger  
 Ernest Berhof  
 Rick and Heidi Bindi  
 Donna and Fritz Born  
 David Brown  
 Mike Burch  
 Susan Burnett-Hampson  
 John and Becky Cardamone  
 Kelvin Chan  
 Gail Cochran  
 Jim Codington  
 John-Logan Coots  
 Tony Crabb  
 Cat Cvengros  
 Jose D’Alessandro  
 Deborah and Stephen Dalton  
 Charlene Daniels  
 Lloyd Davis  
 Joe and Cindy Del Buono  
 Mark Dierkhising and Karen Brodsky  
 Vince Dito  
 Herbert Dwight II  
 Timothy Emanuels  
 Jeanne Erlenborn  
 Dave Fahrner  
 Greg Faulkner  
 Alicia Foley



*SAY Annual Fund Donors continued*

Steve and Rebecca Fuelle  
 Susan Backer and Philip Frankl  
 Stephen Gallenson  
 Joan Gates and Steven Marlowe  
 Scott Gerber  
 Kevin Ghilotti  
 Robert Gleeson  
 Casey Goebel  
 Supervisor Susan and Joe Gorin  
 Mark Gwin  
 Warren Harris  
 Jess Hazlewood and Tim Zalunardo  
 Matt Herman  
 Hai and Jennifer Hong  
 Gina Belforte  
 Gary and Lynn Imm  
 Michele Ingham  
 Darrin Jenkins  
 Mike Kasper  
 Marianna Khumri  
 Eric and Merrie Krisl  
 Nola Lundy  
 Dagny Maidman and Molly Wood  
 Kevin Manemann  
 Ronald and Marilyn Massa  
 Patricia May  
 Roger Meadows  
 Jean Oliveira  
 Maria Cortez  
 Hally DeCarion  
 Frank and Karen Ertel  
 Ellanor and Mitchell Katzel  
 Nicole McKeown  
 Wilson Partridge  
 Bradley and Page Pighin  
 Deva Marie Proto  
 Charles and Patricia Regalia  
 Bob and Patty Reynolds  
 Harry and Dee Richardson  
 Victoria Richardson  
 Steve Rogers  
 Sudha Schlesinger  
 Stephen Smith  
 Troy and Kathleen Sowers  
 Ron and Laura Sparrow  
 Cdr. And Mrs. John Steinmetz  
 Cordel Stillman  
 Amy Strommer

Katrina Thurman and Hunter  
 Wilkinson  
 Ken Tyler  
 Edy Ullman  
 Mindaugas Viela  
 Robert and Karen Beth Walter  
 David D. Watts  
 Suzanne Waxman  
 Steve Weiss  
 Ellie Wiener  
 Brett Wilmes  
 Leroy and Pamela Wilsey  
 Barbara and Larry Wofford  
 Michael and Lee Ann Yaegar

***\$100+***

Anonymous (12)  
 Robert Abram  
 Anne Abrams  
 George Adair  
 Jessica Schroeder  
 Geoffrey Aden  
 Dominic Adorno  
 Antonia Albany  
 Meg and Marc Alexander  
 Harry Allen  
 Mr. and Mrs. Scott Allred  
 Dava Amador  
 Robin Ameral  
 Pedro Andrade  
 Chris Andrian  
 Mela Angleman  
 Kris Applegate  
 Diane Arapov  
 David Arnold  
 Dean Atchison  
 Amy Aurilia  
 Michelle Ausburn  
 John Austin  
 Jim Avera and Barbara Babin  
 Chelsea Avery  
 Rick Avery  
 David Azevedo  
 Gail Azevedo  
 Bruce Backer  
 Jean William Backer  
 Timothy Bacon  
 Greg and Kris Baird  
 Stanley Bakey

Trevor Baker  
 Manuel Baldenegro  
 Keith Baldwin  
 Terri Balletto  
 Erica Barlas  
 Lynette Barlesi  
 Caluha Barnes  
 David and Mary Bartley  
 Robert and Jeanette Bartley  
 Jennifer Basich  
 Paul Battaglia  
 John and Jean Baxter  
 Suzanne Beach  
 Katherine Beacock  
 Greg Beale  
 Kate Becker  
 Scott Beeber  
 David Bell  
 James Bell  
 Kim Belshe  
 Belwicke Family  
 Dante Benedetti  
 Michael Bennett  
 Soheila Benrazavi  
 Jody Benson  
 Jean Benton  
 Michael Berard  
 Michelle Bergsteun  
 Sondra Bernstein  
 Eileen Berry  
 Kathryn Besio  
 John and Kathy Borg  
 Madeline Bessing  
 Linda Bianci  
 Ross and Barbara Bickford  
 Larry and Helen Biddle  
 Ed Biggs  
 Janet Bland and Family  
 Kimberly and Simon Blattner  
 Sherri Lynn Bonnema  
 Ann Boone  
 Margaret Borg  
 Kathryn Borowicz  
 Jessie Boucher  
 Anthony and Tiffany Boyle  
 Kee Robinson  
 Mark Bramfitt  
 Kathy Brandal  
 Sara Brandenburg

Edward Brascia  
 Rick Brewer  
 Lana Brewer  
 Michael and Leilani Brewster  
 Sheila Bride  
 Deborah and Gardner Britt  
 Randolph Brock  
 Brian Brockway  
 Fred Brokaw  
 Anne Mae Brown  
 Andrew Brownstone  
 Chris Brunamonte  
 Barbara Buck  
 Tracey Buck-Walsh  
 Linda Bumgardner  
 Donald W. Burk  
 Steve Burk  
 Ritchie and Marcia Burkart  
 Lori Burmeyer  
 John Burns  
 Eric and Mary Burns  
 Joe Burroughs  
 Deborah Byram  
 Lisa Cadwalader  
 Lynn Kathleen Cadwalader  
 Edward Cale  
 Margaret "Peggy" Call  
 Kimberly Cameron  
 Michael and Linda Canar  
 Aaron and Mandy Carpenter  
 Rachael Cauntay  
 Lisa Cavalli  
 Don and Nancy Sebastiani  
 Alicia Cerruti  
 Mary Anne Cesario  
 Erin Ceynar  
 Richard and Janice Chadwin  
 Kathy Charvat  
 Isabelle Chesley  
 Clayton Chesnut  
 Lindsay Chinapen  
 Jill Cingolani  
 Cecile and Ronald Clabaugh  
 Thompson Cleander  
 Josh and Maddie Cleaver  
 Kimberly Clement  
 Trevor and Amy Codington  
 Jennifer Collins  
 Brian and Sally Connell

Diana Connolly  
 Paula Cook  
 Jared and Amber Cooley  
 Anna Coopersmith  
 Karen Cornwall  
 James Corwin  
 Chris Coursey  
 Barbara Cox  
 Tricia Coxhead and Jerry Anderson  
 Josh Coyne  
 Kenneth Cramer  
 Bryan David Crane  
 Erica Crane  
 Nancy Creveling  
 Michael Crockett  
 Michelle Crosbie  
 Kevin Crosbie  
 Cathleen Crosby  
 John Cunningham  
 Emma Curtiss  
 Willard and Nancy Cutter Richards  
 Tandie and David Dahnke  
 Stephen Daniels  
 Helen Davaran  
 Lee and Pat Davis  
 Donna and Les De LaBriandais  
 Carol Dean  
 Jim DeCota  
 James and Laura Deffendall  
 Alan and Nadine Dei Rossi  
 Odette deLusignan  
 Renda Dennie  
 Mike and April Derby  
 Julie DeRossi  
 Michelle Dominique Desanto  
 Rolf Devegt  
 Sharon Dezurick  
 Robert Dickinson  
 Nancy and Dough Diego  
 Steve Diehl  
 Paul Doderro  
 Jennifer Dowdey  
 Laura Doty  
 Steve and Noreen Dowdey  
 Warren Doyle  
 Susan Drake  
 Eric Drew  
 Brad and Pamela Drexler  
 Tom Dunbar

Tristan Eaken  
 Phyllis Early  
 Carol and Andrew Eber  
 Teresa Ediger  
 Miguel Inong  
 Donald Eidam  
 Sarah Elder  
 Casey Elkin  
 Courtney Ellerbusch  
 Ronald Emanuel  
 Andrea English and Tom Whiteman  
 Vicki Ernst  
 Karen and Frank Ertel  
 Marin Escandon  
 Duskie Estes  
 William Estheimer  
 Stephen Etling  
 Gretchen Evans  
 Katie Evans  
 Meghan Evans  
 Whitney and Jeanette Evans  
 Nicole Evertt  
 Gay L. Fahrner  
 Judy Ann Farah  
 Nancy and Henry Fastenau  
 Deborah Feore  
 Belinda Fernandez  
 Fies Family  
 Kim Fink  
 Neal Fishman  
 Julie Fishman  
 Michael Fishman  
 Andrew Fishman  
 Leland Fishamn  
 Michael Fitzgibbon  
 Brian Fitzgibbons  
 Nyla Fleig and Lisa Mathiesen  
 Caren Florence  
 Sue Flynn  
 Richard Fogg  
 Gregory and Sierra Fontana  
 Marcella Ford  
 C. Mason Forkey  
 Alyssa Fowler  
 Louise Fowler  
 Anadel Fox  
 Rodney Frazier  
 John Frediana

*SAY Annual Fund Donors continued*

Mary Fricker  
 Aaron Friedman  
 Bill Gabbert  
 Robert Gaggero  
 B and C Gallagher  
 James and Silvia Gallagher  
 P. Celester Gantz  
 Rachel Lee Gardea  
 Thomas Garigliano  
 Bill and Patricia Facendini  
 Jane Gaskell  
 Avedis Gavgavian  
 Krista Gawronski  
 Lucas Geis  
 Nancy Giambastiani  
 Robert Giordano  
 Rabbi George and Laura Gittleman  
 Ann Gladding  
 Kent and Lori Godwin  
 Elizabeth Goldman and Nancy Fawcett  
 Bruce Goldstein  
 Casey Goltermann  
 Crucita Gomez  
 Kathy Goodacre  
 Patricia Goodwin  
 Balaji Gopinath  
 Michael and Lisa Gossman  
 Becky Gould  
 Christina Green  
 Don and Cheryl Green  
 Ann Greenwood  
 Denise Guidry  
 Savitha Gurumoorthy  
 Susan Gustavson  
 Maria Gutierrez  
 Ricardo Gutierrez  
 Beth Hadley  
 Amanda Hagar  
 Mark Hale  
 Ramona Haller  
 Donna Hallow  
 Tiffany Hammer  
 Audrey Hammond  
 David Hansen  
 Schuyler Hardesty  
 Richard and Katherine Harkness  
 Linda Harrel  
 Marc Harris

Caryl Hart  
 Marilyn Hartley  
 Rojon and Jay Hasker  
 Virginia Hayes  
 Steve Hecht  
 Mischa Hedges  
 Thomas Heidt  
 Cynthia Heiller  
 Joseph Hennen  
 Marilyn and Kip Herzog  
 Maureen Highland  
 Garrett Hill  
 Neysa Hinton  
 Domenic Hjerpe  
 Sue and Mike Hoey  
 Kathleen Holden  
 Ray Holley  
 Sue Hollingsworth Adams  
 Lauren Holloway  
 R. Guy Holloway  
 Shirley Holman  
 Rebecca Hood  
 Lynda and Emmett Hopkins  
 Debra Lynn Hortum  
 Robert House  
 Angelina Hovan  
 Joshua Howard  
 Kevin Howe  
 Robert Howe  
 An Huang Chen  
 William and Katie Huckeba  
 Jay Hufford  
 Louis Hughes  
 Randall Hula  
 Geraldine and Cecil Humes  
 Rachel Hundley and Sean Hamlin  
 Jim and Candie Huppert  
 Lynn Ichinaga  
 Elizabeth Jack  
 Tom Jackson  
 Jeanie Jacobson  
 Micah Jacobson  
 Jeff and Judy James and Family  
 Peggy and Amy Jennings-Shaw  
 Leslie John  
 Jamie and Karen Johnson  
 Janine Johnson  
 Carol Johnson  
 Linda Johnson

Melanie Jones-Carter  
 Edwije Joseph  
 Elizabeth Junge  
 Krista Kalemba  
 Megan Kalstad  
 Dick Kane  
 Jeffrey Kaufman  
 Carole Keiner and Robert Cooper  
 Ronald Keith  
 Ariel Kelley  
 Sheila Kelley  
 Harris Kempner  
 Michael Kessler  
 Courtney King  
 Michael King  
 Bill and Peggy King  
 Jacala Kinney and Noel Lyons  
 Bruce and Connie Kinnison  
 Mark Kirchner  
 Russ Klein  
 David Kliman  
 Mary and Stephen Knecht  
 Eleanor Kneibler  
 Andrew Koenigsberg  
 John Koenigshofer  
 Eric Koenigshofer  
 Gary Kovacovich  
 Chris Krankemann  
 Dolores Krawchuk  
 Ramsey Kubein  
 Jeff Kunde  
 Chelsea Kurte  
 Brigitte Labouvie  
 Susan Laliberte  
 Caitlin Lampe  
 Nicole Landers  
 Patty Lang  
 Matt Langerman  
 Patricia Langley  
 Bonnye LePeotiere-Sirk  
 William Larkin  
 Tatra-Lida La Rosa  
 Mary Larsen  
 Roberta Latefa  
 Angus and Donna Latta  
 Adam and Becky Lawson  
 Ann Leach  
 Jeanette Lebell  
 Marla LeBlanc

Ardath Lee  
 Karen Lehman  
 Rosemary Lely  
 Joe Lemas  
 Kris Lepore  
 Willie Leuzinger  
 Janine Levijarvi  
 Edward Lewandowski  
 Nancy Lewis  
 Mr. and Mrs. Robert Lewon  
 Daniel Libarle  
 Julian Lifschiz  
 Frances Ligue  
 Jessica Lind  
 Desiree Lindemann  
 Russell Linder  
 Terry Lindley and Misty Wirz  
 Lorraine Linstrom  
 David Little  
 Lauren Lobisser  
 Karen Loewenstern  
 Kristin Long  
 Alison Longman  
 Marivel Lopez  
 Jason Lothario  
 James Loughsborough  
 Joel Louraine  
 Marsha Sue Lustig  
 Leah Lyons  
 Jo Ann MacDonald  
 Julia MacDonald and Rick Wonneberger  
 Roger MacDonald  
 Janet MacDonald  
 Jim and Anita MacInnis  
 Margaret Harder MacPhail and David MacPhail  
 Michael Maddalena  
 Dave and JaneAnn Magnasco  
 Dale Mahoney  
 Richard Mahoney  
 Kristine Malmanis  
 Jennifer and John Mangiantini  
 Cynthia Mann  
 Julie Marble  
 Shane Marble  
 Virginia Marcoida  
 David Marquardt  
 Elizabeth and Robin Marrs

Catherine Martin  
 John and Janis Martin  
 Debra Mason  
 Misti and Randall May  
 Laura McArthur  
 Evie McClintock  
 Erin McClure  
 Tina McDonough  
 Elizabeth McDowell  
 Kelly McGlinchy  
 Senator Mike McGuire  
 Karla McLaren  
 P. McLean  
 David McLennon  
 Courtney McLennon  
 Timothy J. McNamara  
 Jock McNeill  
 Rick Melendy  
 Manda Mello  
 Louis and Sandra Menachof  
 Julie Mendonca  
 Theresa and Ron Meredith  
 Manuel R. Merjil  
 Nancy Messinger  
 Mary Michela  
 Joyce S. Milks  
 Leslie Miller  
 Mike Minium  
 Anne Mirante  
 Mark Moon Welte  
 Elliot Morrison  
 Ron and Dan Moser  
 Larry Moskowitz and Louise Packard  
 Daniel and Jenny Mullan  
 Kathie Murphy  
 Che Casul and Angela Nagel  
 Suzanne Nagorka  
 Clifford G. Nannini  
 James and Gwen Neary  
 John and Lonna Necker  
 Gary and Kathy Negri  
 Jeanne and Tom Nelson  
 Violet Nelson  
 Marvin Nickel  
 Lois Nimmo  
 Deborah Nitasaka  
 Kathy Nixon  
 Oren P. Noah



Tami Norgrove  
 Donna Norrell  
 Lisa Norton  
 James and Barbara O'Donnell  
 Tom O'Doul  
 Philip Oggero  
 Carol O'Hara  
 Julie Oliver  
 Linda Olson  
 Susan Olson  
 Suzanne Olsson  
 Catherine Oneill  
 Cheryl Osada  
 William Owens  
 Scott Palmer  
 Beldon J. Panton  
 Pardella Family  
 Connie Pearson  
 Alyssa Peek  
 Judith Peletz  
 Chris Pellascini  
 Tom Pendleton  
 Steven Pera  
 Lou Perini  
 Gail Perry  
 Kathryn and George Perry  
 Julie Peterich  
 Dan Peterson  
 Jeff A. Pettibone  
 Tuyet-Hanh Pham  
 DJ and Kathie Phimister  
 Stephanie Picard Bowen  
 Betty Pieper  
 Andrea Pierotti  
 Christopher Poehlmann  
 John Post

---

*SAY Annual Fund Donors continued*

Masele Poueu  
Fred Poulous  
Raymond and Denise Pounds  
Anthony and Bertha Powell  
Stacy Powell  
James Prebil  
Ernie Pricco  
Grant and Mary Pritchard  
Susie Pryfogle  
Fred F. Ptucha  
Stephanie Puentes  
Barbara Puentes  
Pat Pulvirenti  
Michael Quinn  
Jeanne Radsick  
Christopher and Shari Ranney  
Jose Raymond  
David and Susan Reber  
Ruth Rector  
Kristine Redko  
Barbara Reid  
Patricia Rey  
Adam Reyes  
Jean Rhoades  
Robert Rice  
Brantly and Nancy Richardson  
Lynn Richardson  
Jennifer Richardson and Shawn Brumbaugh  
Heidi Rickerd-Rizzo  
Blake Ridway  
Crystal Riehl  
David Riley  
Jo Ellen Ripple  
Kitty Ritz  
Linda Roan  
Theodore Robb  
Keith Roberts  
Ashley Robertson  
Sharon and Gerald Robison  
Richard and Karen Rocklewitz  
Deanne Rogers  
Joe and Pixie Romano  
Diane Romine  
Jane Rosenberg  
David Rubinstein  
Richard and Linda Rudnansky  
Heather Ruiz  
Peter Rumble

Dan and Karen Russell  
Michael and Kimberly Ryan  
Kim Ryder  
Helen and George Sager  
Alicia Said  
Josephine Sambado  
Lynn Saperstein  
Gary Saperstein  
Linda Sargent  
Terri Sarto  
Rob Scerri  
Malloy Schaffner  
Kurt Schau  
Marie Scherf  
Irby and Tricia Schexnaydre  
Tony Schmoll  
Jane Schneider  
Keith Schoenthal  
Rebecca Schroeder  
Cara and Alex Schumacher  
Charles Schumacher  
Paul Schwartz  
Daniel Schwass  
Don and Nancy Sebastiani  
Patricia Seffens  
Betsy and Sergio Serafini  
Stephen and Nancy Shaffer  
Catherine Shanahan  
Stephen and Kristine Sheerin  
Jack and Judy Sherman  
John Shinol  
Mark Shisida  
Juanita L. Shrader  
Eleanor Silbeman  
Lydia Sill  
Mr. and Mrs. Don Silverek  
Linda Silverman  
Barbara Simmer  
Mike and Kathy Simmons  
Jeffrey Simpson  
Bhupinder Singh  
Jatinder Singh  
Ann Skriprek  
Barbara Slatkin  
Steve and Wendy Smit  
Andrew and Karen Smith  
Suzanne Smith  
Victoria Smith  
Chris Smith and Diane Peterson

Raymond Snyder  
Sandra Soldate  
Robert Sorenson  
Michelle Soto  
James Spangler  
Jonathan Sparks  
Margaret Spaulding  
Howard Spindler  
Carol Spita  
Robert Stahl  
Tamara Stanley  
David and Julie Stark  
Alexi Stavropoulos  
Miranda Steele  
Carole Stein  
Bruce Stender  
Matthew Stern  
David Kerr  
Matt Strange  
Linda Strong  
Al and Nancy Stumpf  
Gillianne Sue  
Gary and Darlene Sumner  
Brad Sunshine  
Regina Swan  
Ronit Taggart  
Eric Taggesell  
Jenny Tamayo and Nat Seavy  
Willie and Darlene Tamayo  
John and Laura Tarantino  
Chris Taylor  
David and Debbie Taylor  
Michael Teply  
Edwin Thompson  
Karen Thompson  
John and Lorna Thurman  
Lisa Titus  
Todd Tolly  
Michael Tolmasoff  
Carolyn and Daniel Torliatt  
Theary Tran  
Clare Trimbur  
David and Jolie Trogdon  
Garrett Tucker  
Mitch Tucker  
Suzanne Tucker  
Samuel and Pamela Tuft  
Kiyoo Tuckman  
Donald and Christina Turgeon

Jeremy Turpen  
Steven Tuscher  
Margo Tyler  
Jim Upshaw  
Mario and Liz Uribe  
Orchid Vaghti  
Laura Chenel and John Van Dyke  
Alison Vicas  
Gregory Vincent  
Jeff Vincenzini  
Jeff and Lee Ann Von Raesfeld  
Jennifer and Robert Wallace  
Rod and Lynne Wallace  
Greg and Judy Walsh  
Beth Warner  
Pamela Warren  
Carol Washburn  
Dewey Watson  
Mark Watt  
Anne Webb  
Andy Weber  
Jo Weber  
Jean Weese  
Jonathan Weiner  
Ken Weise  
Renee Welles  
Carol Wellman  
Trent and Karina West  
Jerry Wheeler  
Wendy Wheelwright  
Bert Whitaker  
Christine Whittemore  
Jessica Wichmann  
Frank Wiener  
Nancy Wiens  
Dawn Wilburn-Saboe  
Yvette Willeford  
Kimberly Willis  
Nancy Wilson  
Brandy Wince  
Amie and Jason Windsor  
Traci Wittke  
Patricia Wix  
Daniel Woloz  
Lynette Wong  
Terry Woodard  
Steve and Georgia Worthen  
Heather Wright  
Nikki Wyrsh

Cathleen and Jonathan Yarger  
Lisa Yoshida  
Sharon Young  
Alan Zalewski  
Marc and Wayne Zammit-Crabbs  
Evan Zelig  
Brian Zeme  
Dr. and Mrs. Gene Zingarelli

---

*Under \$100*

Anonymous (23)  
Nicole Abate Ducarroz  
David Abbott  
Richard Adams and Susan Spar  
Richard Addison  
Shelly Agerter  
Christina Aldrich  
Kathy Alexander  
Johanna Allen  
Marcella Allen  
Shannon M. Allen  
M. Aloj  
Brian Ambrosi  
Mark and Kara Ameral  
Cynthia Amick Bitner  
Jose Anaya  
Christine R. Anderson  
Lisa Andrews  
Paul Andrews  
Angela Aquila  
Karleen Arnink-Pate  
Carmen Arroyo  
Roberta Atha  
Lew Atheron  
Davin Bacho  
Bianca Baggenstos  
Lorez Bailey  
Brenda Bailey  
Hunt Bailie  
Andrew Bain  
Watson T. Baker  
Jason Balatti  
Richard Norman Bale  
Lisa Banayat  
Jennifer Paula Bandt  
Pamela Barreiro  
Rebecca Barron  
Natasha Beauchamp  
Patricia Becker

Nancy Bei  
Brooke Bell  
Jenna Bell  
Charlyn Belluzzo  
Lynn Berard  
Jill Berger  
Alex Bernard  
Tom Berry  
Laurie Bertacco  
Leah Bertoli  
Nicola Bilger  
Dina Birmingham  
Bruce Black  
Genevieve Blanchard  
Monique Blankenheim  
Kandi Blomquist  
William Blum  
John Bly  
Mike and Susan Bobbitt  
Andrew Boe  
Jennifer Boesel  
Shannon Bondoc  
Randall Boone  
Cassie Bost  
Alberto Botello  
Yosha and Shaina Marie Bourgea  
Diane Bowers  
Tom Boylan and Melody Montero  
Greg Bradley  
Terese Bradshaw  
Andi Brady  
Christine Bragale  
Robyn Bramhall and Ellen  
Maremont Silver  
Donna Branham  
Genevieve Brassard  
Jacqueline Brazieal  
Dianna Brennan  
Zachary Bressick  
Cristin Brew  
Phyllis Brewer  
Frank and Penny Briceno  
Ninette Brintz  
Paul L. Brizzolara  
Benjamin Broadbent  
Heather Brown  
Pamela Brown  
Jennifer Brown

*SAY Annual Fund Donors continued*

Lynnette Brown  
 Sara Brown  
 Lindsay Brunson  
 Edward Buenrostro  
 Beth Buhler  
 Lyndsey Rose Burcina  
 Rene Bury  
 Bryan Butler  
 Nicholas Cadigan  
 Superintendent Callihan  
 Lea Campbell  
 Martin Campsalot  
 Constance Capo  
 Stephen and Constance Carey  
 Chad Carlstedt  
 Jackie Carpenter  
 Carlos Carrera  
 Brandon Carrillo  
 Efren Carrillo  
 Jennifer Carrol  
 Mary Carson  
 Jamilee Carter  
 Judy Carter  
 Dan Carter  
 Kathy Carver  
 Jennifer Castleberry  
 Lori Chapman  
 Juana Chavez and Guadalupe Figueroa  
 Tina Chavez  
 Caitlin Childs  
 Renise Chiotti  
 Maire Chodkowski  
 Roseanne Christensen  
 Phyllis Christian  
 Sharon Irene Church  
 Maria Cipriani  
 Nancy Clarke  
 Kathleen Clifford  
 Angela Clond  
 Nancy Clough  
 Sharon Clouse  
 Allison Coats  
 Joel Scott Toble  
 Patricia Coe  
 Jeffrey Colaizzi  
 Jerry and Mary Coleman  
 Gary and Kathryn Comstock  
 Katharine Conforti

Jim Connolly  
 Judeann Conry  
 Andrew Conway  
 Diane Cooke  
 Robin Cordell  
 Monica Cose  
 Joe Costamagna  
 Jerry Coursey  
 Naomi Crawford  
 Joan Creighton  
 David Creswell  
 Kamala Crompton  
 Ceylan Crow  
 Vincent Cruz  
 Eric Culbertson  
 Michele Culbertson  
 Tracy Cunha  
 Diana Curtin  
 Lacie Lee Dahnke  
 Michelle Dale  
 Elizabeth Dalton  
 Linh Dang  
 Abraham Daniels  
 Cari Davies  
 Juan Davila  
 Pamela Davis  
 Catherine Davis  
 Jan and Ed Davis  
 Marilyn Davis  
 Arthur Dawson  
 Melinda Deay  
 Emily DeBacker  
 Allison Deering  
 Corryn Degelabert  
 Jody Deike  
 Jose and Christine Del Castillo  
 Rebecca del Rio  
 Catherine Delao  
 Jeanne Delario  
 Roberta Delgado  
 Pat Dellin  
 William Demar  
 Lauren Dennis  
 Peter DePavloff  
 Lisa DeSoto  
 Adam Diaz  
 Chris Dick  
 Jeanette Dillman  
 Angie Dillon-Shore

Alexis Disabato  
 Brigitte Doess-Muggli  
 Kerrie Dolcini  
 Guinevere Doner  
 Renee Donmon  
 Rachelle Dorris  
 Gail Spielman  
 Libby DuFresne  
 Ryan Dunlap  
 Marsha and John Dupre  
 Lissa Duran  
 Tyler Durrell  
 James and Paula Duvander  
 Veronia Echavarria  
 Marlina Eckel  
 Joan and Robert Edgley  
 Neil Erlich  
 Lindsey Ehrlicher  
 Matthew Ellis  
 Scott Emerick  
 Traci Emery  
 Gloria Epperson  
 Judy and Greg Ervice  
 Jose Esparza  
 Francisco Espinoza  
 Nikhi Evanko  
 Margaret Evans  
 Colin Fahrner  
 John W. Fahrner  
 David Faris  
 Dayna Farquhar  
 Daniel Farris  
 Sara Farrow  
 Tracy Faulkner  
 Lynn Fehrman  
 Rebecca Fein  
 Marybeth Fenton  
 David and Julia Fernandez  
 Kimberly Ficera  
 Lauren Figueroa  
 Bryan and Roseanna Fykes  
 Maria Finkel  
 Brooke Finley  
 Noelle Fisette  
 Barbara Fischer  
 Brian and Katie Fleck  
 James and Birgitte Foley  
 Councilmember Dominic Foppoli  
 Jacob Forbis

Ben Ford  
 Betty Forehand  
 Christa and Timothy Forslund  
 Jaime Foster  
 Margie Foster  
 Dave Franceschi  
 William J. Frankl  
 Christopher K. Franklin  
 Erin Fresquez  
 Sylvia Frey  
 Nathan Friar  
 Linda Friedman  
 Joann Fuller  
 Sunny Galbraith  
 Magdalene Gallimore  
 Paulette Gamba  
 Amanda Gareis  
 Thomas Garrett  
 Leon Geisberg and Marjorie Mann-Geisberg  
 Kim D. George  
 Cathryn Ann Geppert  
 Kellin Gerbin  
 Karen German  
 Teja Gilmour  
 Patty A. Ginochio  
 Karen Giovannini  
 Sarah Glade Gurney  
 Ben Goldberg  
 Katrina Goldberg  
 Joanne Golden  
 Laura C. Goldman  
 Teri Gomer  
 Taylor Elizabeth Gomes  
 Veronica Gomez  
 Shelly Gomez  
 Lili E. Goodman  
 Bruce Gould  
 Irene Graff  
 Dana Grande  
 Leslie Grassl  
 Mr. and Mrs. David Graves  
 Brian Grayson  
 Paige A. Greco  
 Robert Greenburg  
 Jill Greengrove  
 Elise Gressman-Weaver  
 Jay and Nikki Griffin  
 Nicole Grimes

Rebecca Groah  
 Glenn Groves  
 Mimi Guerrero  
 Daniel Guida  
 Paul Gullixson  
 Holly S. Gulrich  
 S.E. Gutierrez  
 Regina Haddorff  
 Jill Hager  
 John Haig, Jr.  
 Sue Ann and Thomas Hale  
 David Hall  
 Keri Hallin  
 Esther Hallmeyer  
 Michelle Halverson  
 Hanin Hamami  
 Lindsay Hamilton  
 Ashley Hamlett  
 Theresa Hamlin  
 Goretti Hamlin  
 Jennifer Hammond  
 Trever and Mary Hammond  
 Shawnda Hansen  
 Lisa Hansen  
 Holly Hansen  
 Madeline Hansen  
 Michael Haran  
 Allison Harig  
 Sandra Harris  
 Jennifer Harris  
 Ann Harris  
 Ruth Ann Harris  
 Mary Hart  
 Jessica Hart  
 Anne-Marie Hartwig  
 Sheri Hartz  
 Corey Hayes  
 Kathryn Hayes  
 Pam Hayne  
 Olivia Maria Haywood  
 Roger Hebert  
 Elisabeth Hegedus  
 Paige Hein  
 Sarah J. Henderson  
 Valerie Henderson  
 Donna Hendrickson  
 Penny Herman  
 Jill Hernandez  
 Kathy A. Hernandez



Herman G. Hernandez  
 Ariel Hiatt  
 E.I. Hillin  
 Elizabeth Hindman  
 Nicole Lyn Hinrichs  
 Alicia Hodenfield  
 Adam W. Holdren  
 Anthony Hopkins  
 Penelope and Alexander Horobin  
 Kathy Housman  
 Norman Howard  
 Margaret Howe  
 Lia Huber  
 Kinsey Hudson  
 Maria Huerta  
 Grace Hull-Hughes  
 Marc Ialeggio  
 Laura Ice  
 Michael Imahara  
 Jennifer Imbibo  
 Laurel and German Imhoff  
 Meredith Imrie  
 Sharon Inase  
 Wayne Ingraham  
 Andrew Inness  
 Denise Inness  
 Connie Irwin  
 Susan Jacobs  
 Jerry James  
 Alan Jaroslovsky  
 Jessica Jauregui  
 Norma Jellison  
 Jacqueline Jenkins  
 Al Jennings  
 Cheri Johnke  
 Shelia Johnson

*SAY Annual Fund Donors continued*

|                          |                            |                              |                              |                               |                            |
|--------------------------|----------------------------|------------------------------|------------------------------|-------------------------------|----------------------------|
| Julie Johnson            | Suzanne M. Lang            | Rene Markarian               | Rosemary Mojica              | Neil Emerson Pacheco Sr.      | Devon Richardson           |
| Barbara and Roy Johnston | Tim Langton                | Teresa Marlow                | Connie Montalbo              | Linda Palmero                 | Belinda Riehl              |
| Judi Jones               | Michelle Lanting           | Leslie Martensen             | John Montes                  | Mara Palmer                   | Jenny Rihl                 |
| Joseph Jones             | Diane Larkin               | Leah Martin                  | Tiffany Montgomery           | Perri Ellis Paniagua          | Melissa Riley              |
| Robert and Cherie Jones  | Michele Larkin             | Elizabeth Martin             | Elizabeth Moore              | Christina Panza               | Nancy and George Rivas     |
| Tiffany Jonsson          | Michael D. Larsen          | Adam Martindale              | Ben Moore                    | Kathleen Parker               | Rafael Rivero              |
| Kathleen Jowdy-Koran     | Debora Larson              | Daniel Martinez              | Hilary Moore                 | Kristine M. Patalano          | Jon Rivers                 |
| Jeanene Juarez           | Brittany Larson            | Kayla Martinez               | Nancy Moorhead               | Charles Patchet               | Frank Robertson            |
| David Kadel              | Bethany Laurence           | Dan Martini                  | Michael Mora                 | Michael Benjamin Patricks     | Marile Robinson            |
| Jospeh Kaluahine         | Barbara Lee                | Anne Martino                 | Sheila Morrissey             | Eva Pavlicek                  | Ronnie Roche               |
| Roni Kalyk               | Rich Lee                   | Donna Mastronarde            | Amy Moss                     | Amber Payne                   | Edgar Aldo Rodriguez       |
| Ron Kamler               | Winston Lee                | Tammi Mathias                | George W. Mostrant           | Georgia Pedgrift              | Danielle and Siegel Romero |
| Sally Kane               | Sheri Lefman               | Sandi Maurer                 | David Mould                  | James and Gisele Pekkain      | Ernest D. Rose             |
| Shelley Katz             | Ben Lehr                   | Janet Lynn Maurer            | Ellen Mufson                 | Sophorn Pen                   | Denise Rose                |
| Lisa Kayes               | Judy LeMarr                | Dean Maynard                 | Robert Mullens               | Jennifer Perez                | Anita Pinney               |
| Jeanne Kearns            | Nona Leone                 | Mary McCarty                 | Pam Mullins                  | Darran Peter                  | Elizabeth Rouse            |
| Scott Kearns             | Victoria Lester            | Jenny McClelland             | Mirja and John Munch         | Connie Petereit               | Mary Royston               |
| James and Virginia Kelly | David M. Levya             | Jana McClelland              | Marian Murphy and Mary Brown | Curtis Peters                 | Patrick Rudder             |
| Kathryn Kelly            | Mirin Lew                  | Dr. Andrew McCormick         | Jennifer Murray              | Linda Peters                  | Marilyn Rumble             |
| Mary Kennedy             | Carmelita Lewis            | Connie McCullough            | Robert Muszynski             | Donna Peterson                | Rachel Rudder              |
| Natalie Kent             | Brian Libby                | Laura C. McDowell            | Alex Mutter-Rottmayer        | Douglas Peterson              | Angela R. Ryan             |
| Benjamin Kerstetter      | Lisa Licea                 | Walter and Robert McElroy    | Janel M. Nahas               | Michelle Pfann                | Remberto Salinas           |
| John Kettles             | Andrea Lifto               | J. McGhee                    | Enrique Naranjo              | Tomas Phillips                | Laura and D Salo           |
| Kelly Kilby              | Steve Lightman             | Brynn McGilloway             | Sandra Nelson                | Patrick Picard                | Emily Sanborn              |
| Abigail Killey           | Christine Lindauer         | Charles McGowan              | Barbara Nelson               | Gayle Pickrell                | Anne Sanchez               |
| Kevin and Martha King    | Todd Lindemann             | Thomas and Joanne McHugh     | Pamela and Joel Neuberg      | Renee Pilkenton               | Maribel Sanchez            |
| Elizbeth Kinney          | Carolyn Lintott            | Paul McKairnes               | Brenda Nichols               | Benjamin and Heidi Plank      | Kalli Sandberg             |
| Ryan Kirchner            | Lee Lipinski               | Deborah McKay                | Ryann Niday                  | Cheri Plattner                | Mark and Katie Sandeen     |
| Mae Kiriaze              | Dina Lloyd                 | Meghann McLinden             | Sharilyn M. Nielsen          | Lauri Plummer                 | Greg Sanford               |
| Courtney Kiser           | Molly Locke                | Don and Cynthia McMahan      | Danielle Niemi               | Kim Pollicove                 | Joceyln Santiago           |
| Ellen Kobori             | Aaron Locks                | Barbara McNally              | Kathy Niles                  | Debra Poulnot                 | Robert Sargent             |
| Stephanie Koelling       | Lisa Lomeil                | Allison McQuade              | Leslie Norman                | Barbara Powell                | Adam and Rene Saxton       |
| Ken Koenigshofer         | Der Lor                    | Meghan K. McQuade            | Rose Norris                  | Gary Pratt                    | Tracy Scala                |
| Michelle Koenigshofer    | Terry Loveton              | Nancy McSorley               | Katherine Norton             | Dr. Barbara Prosniewski       | McKenzie Schaffner         |
| Paul Koenigshofer        | Marlene Lowenthal          | Jill Medin                   | Andrea and Pam Norup         | Christine Pucciini            | Anthony Schapero           |
| Sandra Koppen            | Michelle Lua               | Betsabe Aparicio             | Diane Novak                  | Christina Marie Pullen        | John Schempf               |
| Alexandra Korin          | Shawn-Paul W. Luchin       | Lannie Medina                | John R. O'Brien              | Darlene and Michael Pullen    | John Scheuring             |
| Heather Kovac            | Jenny Lynch                | Fran Meininger               | Tom O'Brien                  | Christy Qabazard              | Michelle Schiavone         |
| Guy Kovner               | Morgan Madrid              | Carol Ann Melendez           | Patricia O'Connell           | Kimberly Quan                 | Margaret Schirle           |
| Scott Kraft              | Meridith Mace              | Steven Meloan                | Joanne Okazaki               | Jeffrey Quattrone             | Hiromi Schneider           |
| Kelly Kreglow            | Shiloh Macheras            | Kristine and Michael Metzler | Suzanne O'Keeffe             | Thomas Quinn                  | Maurly and Ann Schulkin    |
| Steve Krikac             | Holly Michelle Mackin      | Philip Meyer                 | Diantha Okrepkie             | Ryan Rabellino                | Marie Shutz                |
| Holly Kulak              | Jennifer MacNeil-Blackwood | Aunt Mike                    | Joerng Olson                 | Steve and Eleanor Rabinowitsh | Jan Schwartz               |
| Anita E. Kuller          | Veronica Madrid            | Frederick Miller             | Cathleen O'Mara              | Geran Ranney                  | David Scott                |
| Anne Kuschner            | Bianka Magallan            | Jennifer and Lincoln Miller  | Kevin Onizuka                | Lynn Recchia                  | Stelle Sedletskaya         |
| Therese LaLonde          | Peg Malumphy               | Roger and Patricia Milligan  | Whitney Opperman             | Lucy Reckseit                 | Anne Seeley                |
| Jennifer Lambert         | Nancy Manchester           | Grace Miranda                | Lisa Orloff                  | Paula Reinhold                | Annette Seibel             |
| Tina and Victor Lameyse  | Lisa Mann                  | Heidi Mitarai                | Casey O'Shea                 | Meredith Rennie               | Beth Seifert               |
| Megan Lang               | Julia Marble               | Jesse Modica                 | Nicole Ours                  | Manuela Reyes                 |                            |

Greg Seifter  
 Sarah Seitchik  
 Jette Selberg  
 Nins Seliga  
 Kristen Selvage  
 Scott D. Serena  
 Angela Sharp-Sabatino  
 Ann and Asher Sheppard  
 Lorna Sheridan  
 Debra Sherman  
 Marian Shields  
 Kathleen Shimmin  
 Tony Shoemaker  
 Janice Shuck  
 Karen and Andrew Sierocinski  
 Carolyn Simpson  
 Amanda Singleton  
 Sharon L. Smith  
 Ed Smith  
 Russell P. Smith  
 Grant Smith  
 William Sniffin  
 Nancy Sobczak  
 David Soldavini  
 Marney Solle  
 Ian Solof  
 Deborah Solvason  
 Robert and Sharon Sorani  
 Melinda Sperbeck  
 Ingrid Spetz  
 Carrie Spritzer  
 Margaret Spruce  
 Lorraine Staab-Leonhardt  
 Ann Regina Stateler-Calhoun  
 Devin Stearns  
 Barry Stelling  
 Joseph Stern  
 Betsy and Craig Stewart  
 David Stimmel  
 Mitchel Stogner  
 Luben Stoilov  
 Jennifer Strunk  
 Jeran Stumbaugh  
 Lisa Sully  
 Amalan Sunder  
 R.C. Surlow  
 Steven Susavilla  
 Kathleen Sutton  
 Cassandra Swihart

Christina Syversen  
 Christopher Szecsey  
 Christine Tannehill  
 Bryan Taylor  
 Jamie Priess  
 Jacqueline Teichert  
 Michael Terry  
 Joseph and Suzanne Tesconi  
 Don Thoemke  
 Christopher Thomas  
 Wendi Thomas  
 Kathryn Thompson  
 Julie Thompson  
 Lauren Thompson  
 William Thorn  
 Shelby Thurman  
 Kristin Thurman-Fein  
 Natalie Tilley  
 David and Kay Torre  
 Elena Toscano  
 Elena Traboulsi  
 Chris Tracy  
 Sally Traughber  
 Stacy Tucker  
 Brian Tuller  
 Nancy Turner  
 Glen Twombly  
 Susan Upchurch  
 Ricardo Valdivia  
 Michelle Valdivia  
 Janny van Aalderen  
 Anna VanCamp  
 Pamela and Todd Vandenburg  
 Margery Van Dorp  
 Jim Vaughn  
 Mauro Vazquez  
 Amy Velasquez  
 Jessica Velasquez  
 Katy Verke  
 Todd Virkus  
 Jon and Kaylin Vissman  
 Andrew Wagner  
 Jerome and Karen Wagner  
 Terrie Wallin  
 Katelin Walters  
 Christopher Wareham  
 Susan Warner  
 Lisa Warner  
 Tracy Warner

Marianne Waters  
 Brad and Kristina Watson  
 Kelly Weaver  
 Richard Wedge  
 Jason Wehde  
 Elizabeth Weigen  
 Jennifer Weiss  
 Tracey Welch  
 Linda Wyers  
 Debra Whitcomb  
 Laurie and Tom White  
 Luran and John Whiting  
 Jacqueline Wilde  
 Ron and Elaine Willenborg  
 Nicole Williams  
 Jeffrey Williams  
 Andrea Williams  
 Casey Williams  
 Jennifer Lynn Willits  
 Dexter Wilson  
 Dan Wilson  
 Laura Wilson  
 Nathan Wilson  
 Jeanette Wilson  
 Sara and Tim Windsor  
 Isaiah Wisdom  
 Heather Wise  
 Robert Wisotzky  
 Aristotle Wolfe  
 Diana and Jeff Wolfe  
 Caitlin Woodbury  
 Amanda Woodmansee  
 Jerry Woodward  
 Tom Woolf  
 Eric Wycoff  
 Joseph Yacura  
 Donna Zapata  
 Karina Zapp  
 Jenna Znak  
 Richard Zweig

If we omitted you or if there is an error in your name, we want to make it right. Please email or call Dennis Agnos: [dennis.agnos@saysc.org](mailto:dennis.agnos@saysc.org), 707-800-3967

## Foundation Partners

Connection and self-sufficiency are possible when youth are provided individualized, appropriate, and compassionate supportive services and programs. Our foundation partners recognize the importance of general operating and program funding opportunities and we are proud to partner with these institutions.

- |  |  |   |
|--|--|---|
| Ahmad-Sedlander Family Trust                                     | John Jordan Foundation                 | Sonoma County Medical Association Alliance Foundation |
| AmazonSmile Foundation   | Joseph B. Gould Foundation             | Speedway Children's Charities                         |
| American River Bank Foundation                                   | Kaiser Permanente Foundation           | Sutter Bay Medical Foundation                         |
| AT&T Foundation  | Kimball Foundation                     | Talbott and Riley Family Fund                         |
| Bancroft Foundation  | Joseph and Vera Long Foundation        | T-F Foundation  |
| CarMax Foundation  | M.S. Grumbacher Foundation             | Valley of the Moon Rotary Foundation                  |
| Chauncey and Marion Deering McCormick Foundation                 | Marin Community Foundation             | Weill Family Foundation                               |
| Codding Foundation   | May and Stanley Smith Charitable Trust | William and Flora Hewlett Foundation - PropelNext     |
| Comcast Foundation   | Medtronic Foundation                   | Zimberoff Family 1991 Trust                           |
| Community Foundation Sonoma County                               | Messing Family Charitable Foundation   |   |
| Ernest L. and Ruth W. Finley Foundation                          | New York Life Foundation               |   |
| Evelyn Grace Lotti Little Johnny Endowment Fund                  | Operation USA                          |   |
| Fund for Shared Insight, Rockefeller Philanthropy Advisors, Inc. | Pledgeling Foundation                  |   |
| George and Lena Valente Foundation                               | Rockefeller Philanthropy Advisors      |   |
| Hansen Family Foundation   | Rose Marie Piper Foundation            |   |
| Heneghan Family Fund   | Santa Fe Community Foundation          |   |
| Jacobson Family Charitable Account                               | Sherman Family Foundation              |   |
|  | Sky Ranch Foundation                   |   |
|  | Smart & Final Charitable Foundation    |   |



## Corporate Partners

Corporate partnerships ensure the long-term sustainability and continued impact of SAY's housing, counseling, and career services. Whether through budget-relieving trade agreements, event and program sponsorships, or third-party fundraising initiatives, we are strategically aligned with some of the top businesses in our community.

|                                      |                                       |
|--------------------------------------|---------------------------------------|
| A & C Bookkeeping                    | Design In Wood, Inc.                  |
| Accounting on Computers              | Dierk's Parkside Cafe                 |
| Acupuncture Mama Inc                 | E Tee Shirts                          |
| Allianz Global Corporate & Specialty | E-CIG 101                             |
| Andrea's Hauling                     | Encore Wealth Management              |
| Apple                                | Exchange Bank                         |
| Balletto Vineyards                   | First American Home Warranty          |
| Bank of America                      | Fitness of Fire Norcal                |
| Bank of Marin                        | Flying Cloud Farm Inc.                |
| Bauer Associates, Inc                | Focus Real Estate & Investments, Inc. |
| Biagi Bros, Inc.                     | Friedman's Home Improvement           |
| Bluestone Zunino & Hamilton, LLP     | Friendly Feed & Supply                |
| BoDean Company                       | Full Circle Inspections               |
| Body & Soul                          | Germaricorp, Inc.                     |
| Boeing Company                       | Gilleran Energy Management            |
| BPM, LLP                             | Google                                |
| Brown-Forman Corporation             | HenHouse Brewing Co.                  |
| C. Scott Kirk Law Firm               | Hogan Land Services                   |
| Canyon Rock Co., Inc                 | Innovative Screen printing            |
| Chandi Hospitality Group             | Interiors Incorporated                |
| Clover Sonoma                        | Jackson Family Enterprises            |
| Comcast - North Bay                  | JanSport                              |
| Costco - Santa Rosa                  | Johnson Pool and Spa                  |
| DeDe's Rentals & Property Management | JT's Collectibles                     |
| Deelightful Studios                  | Justin Vineyards & Winery, LLC        |
|                                      | Kadon Trucking                        |



|  |
|--|
| Kaiser Permanente                      |
| Kesson Company Inc                     |
| Keysight Technologies                  |
| Korbel Winery                          |
| KP Lely Co., Inc.                      |
| La Crema Winery                        |
| La Tortilla Factory                    |
| LACO Associates                        |
| Lagunitas Brewing Company              |
| Law Offices of Walter Rubenstein       |
| LPL Financial Foundation               |
| Luther Burbank Savings                 |
| Magdalena Stefanek Photography         |
| Marketing Masters of Sonoma County     |
| Marmot Mountain LLC                    |
| McLea's Tire & Automotive Centers      |
| Merrill Lynch                          |
| Michael A. Cook Landscape Architecture |
| MikkiMoves Real Estate-Humboldt County |
| Montgomery Village                     |
| Network for Good                       |
| North Bay Association of Realtors      |
| North Bay Business Journal             |
| North Bay Concrete                     |

|  |
|--|
| North Bay Insurance Brokers                      |
| Nova Group Inc.                                  |
| O'Brien Watters & Davis, LLP                     |
| Papas and Pollo Corp.                            |
| Perry, Johnson, Anderson, Miller & Moskowitz LLP |
| Petaluma Creamery                                |
| Peterson Cat                                     |
| Pilates Rx                                       |
| Pisenti & Brinker LLP                            |
| Poppy & Vine LLC                                 |
| Prairiefire Productions, Inc                     |
| Press Democrat                                   |
| ProCleaners                                      |
| Purple Wine + Spirits                            |
| Recology Sonoma-Marin                            |
| Redwood Credit Union                             |
| Roaring Mouse Productions                        |
| Rohnert Park Transmission                        |
| Salesforce.org                                   |
| Sally Tomatoes                                   |
| Sam's Mediterranean Deli                         |
| Santa Rosa Therapeutic                           |
| Sebastopol Hardware                              |
| Signarama Santa Rosa                             |
| SoFi Lending Corp                                |
| Soiland Co. Inc                                  |
| Solmate Socks                                    |
| SOMO Village                                     |
| Sonoma-Cutrer                                    |

|  |
|--|
| Sonoma Canopy Tours                        |
| Sonoma County Airport Express, Inc.        |
| Sonoma Media Investments                   |
| Sonoma Sold, Inc.                          |
| Sonoma Sterling Limousines and Party Buses |
| Sonoma Valley Escapes                      |
| St. Joseph Health                          |
| Stripe 'N' Seal, Inc. dba Aaron Paving     |
| Summit State Bank                          |
| Sutter Health                              |
| SV Escapes                                 |
| Symmetry Pilates Studio                    |
| The Barlow                                 |
| The Tuxedo Gallery                         |

|                              |
|------------------------------|
| Thompson Cleaners            |
| Timmins Painting             |
| Tomatina Restaurant          |
| TrimTab Media                |
| UW                           |
| V. Dolan Trucking Inc.       |
| Varenna Retirement Community |
| Vintage Wine Estates         |
| Walter & Prince LLP          |
| Wells Fargo                  |
| Westamerica Bank             |
| Wright Residential           |
| Zyromski Konicek LLP         |



*"I just want to thank you for your help. It's nice knowing that you genuinely want to help me with stuff, and you never make me feel like I'm bothering you." —21 year old client*

## Community + Government Partners

As the leading youth service provider in the region, SAY does not duplicate the work of others, but collaborates with many local community and government agencies to offer an unrivaled continuum of services. Our contracts and partnerships with these agencies allow SAY to provide services where and when young people need us most.



- American Red Cross
- Behavioral Health Nonprofit Collaborative
- Best Buddies at Windsor High School
- Boys & Girls Club of Central Sonoma County
- Boys & Girls Club of Sonoma Valley
- Burbank Housing
- California Department of Housing and Community Development
- California Gang Reduction Intervention and Prevention Program (CalGRIP)
- California Office of Emergency Services (CalOES)
- California Parenting Institute
- Catholic Charities
- Center for Spiritual Living
- Christ Church United Methodist
- City of Santa Rosa (Measure O & Violence Prevention Partnership)
- City of Santa Rosa (Recreation & Parks, Human Resources, and Water Department)
- Community Safety Foundation
- COTS
- Cradle to Career Sonoma County
- Elks Lodge 901 Petaluma
- eScrip
- Face to Face
- Faith Lutheran Church
- Finley Foundation
- First Congregational United Church of Christ
- Foresters
- Forget Me Not Farm, Sonoma County Humane Society
- Geyserville Unified School District
- Girl Scouts #10024
- Goodwill Redwood Empire
- Goodwill Redwood Empire
- Hippie Moms Norcal
- Human Race of Sonoma County
- Junior League of Napa-Sonoma
- Kiwanis - Redwood Empire
- La Luz
- LifeWorks
- Mary Wahl Chapter LE, D.E.D.

- Montgomery Village Shopping Center
- National Alliance for Grieving Children
- Never Surrender Foundation
- Oak Leaf Rebekah Lodge #74
- Peace Officers Association of Petaluma
- PEO Sisterhood, Chapter TH
- Petaluma Health Center
- Petaluma People Services
- Petaluma Valley Rotary
- Positive Images
- REACH Charter School
- Reach for Home
- Rohnert Park Animal Shelter
- Rotary Club of Petaluma Valley
- Rotary Club of Santa Rosa
- Rotary Club of Valley of the Moon
- Santa Rosa Church of the Nazarene
- Santa Rosa City Schools
- Santa Rosa Community Health Centers
- Santa Rosa Democratic Club

- Santa Rosa Homeless Collective
- Santa Rosa Junior College
- Santa Rosa Police Department
- Santa Rosa Police Management Association
- Santa Rosa Police Officer's Association
- Santa Rosa Sunrise Rotary Club
- Sebastopol Odd Fellows Lodge
- Seneca Family of Agencies
- Sharon Green Chapter TH, D.E.O
- Shoreline Unified School District
- Sonoma County Community Development Commission
- Sonoma County Continuum of Care
- Sonoma County Employer Advisory Council
- Sonoma County Employer Advisory Council
- Sonoma County Health Department (Behavioral Health)
- Sonoma County Homeless Youth Task Force
- Sonoma County Human Services Department (Employment and Training; and Family, Youth, and Children)
- Sonoma County Human Trafficking Task Force
- Sonoma County Medical Association
- Sonoma County Office of Education
- Sonoma County Probation Department

- Sonoma County Special Education Local Plan Area (SELPA)
- Sonoma County Vintners Foundation
- Sonoma County Workforce Investment Board (WIB)
- Sonoma County Youth Ecology Corps
- Sonoma Food Runners
- Sonoma Valley Unified School District
- Sonoma Wine Country Weekend
- Soroptimist International of Santa Rosa
- Soroptimist International of Healdsburg
- Spirit Of Christmas
- Spring Lake Village
- St. Andrew Presbyterian Church Deacon Fund
- St. Mark Lutheran Church
- Strawberry Student Council
- Sutter Health
- Teen Services Sonoma
- Thanksgiving Lutheran Church
- The Center for Social and Environmental Stewardship
- The Golden Road Alchemy
- Transcendence Theatre Company
- Unitarian Universalist Congregation
- United Methodist Women-Windsor



- United Way CA Capital Region Campaign
- United Way of the Bay Area
- United Way of the Wine Country
- Unity Church of Santa Rosa
- US Department of Health and Human Services, Administration for Children and Families, Family & Youth Services Bureau
- US Department of Housing and Urban Development (HUD)
- Verity
- VOICES
- Volunteer Center of Sonoma County
- West County Community Services
- West County Health Centers

If we omitted you or if there is an error in your name, we want to make it right. Please email or call Dennis Agnos: [dennis.agnos@saysc.org](mailto:dennis.agnos@saysc.org), 707-800-3967





# SAY

Social Advocates for Youth

2447 Summerfield Road  
Santa Rosa, CA 95405  
707-544-3299 Tel.  
707-544-6837 Fax  
[www.saysc.org](http://www.saysc.org)

